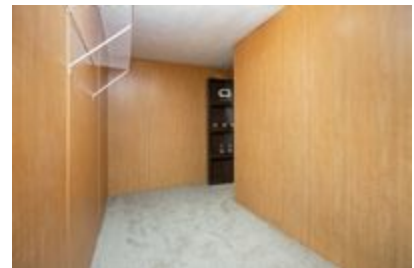




TAHOE 3272A



**TAHOE 3272A** Model number: 25RGR32723AH19

**3 beds • 2 baths • 2304 sq.ft. • 32' width • 72' depth**

Our home building facilities invest in continuous product and process improvements. Plans, dimensions, features, materials, specifications and availability are subject to change without notice or obligation. Renderings and floor plans are representative likenesses of our homes and may differ from the actual homes. We invite you to tour a Home Center near you and inspect the highest value in quality housing available or call (423) 921-8333 to speak with a Home Consultant. Copyright 2017, CMH. All rights reserved.

<https://www.claytonhomesofrogersvilletn.com>

**CLAYTON HOMES-  
ROGERSVILLE**

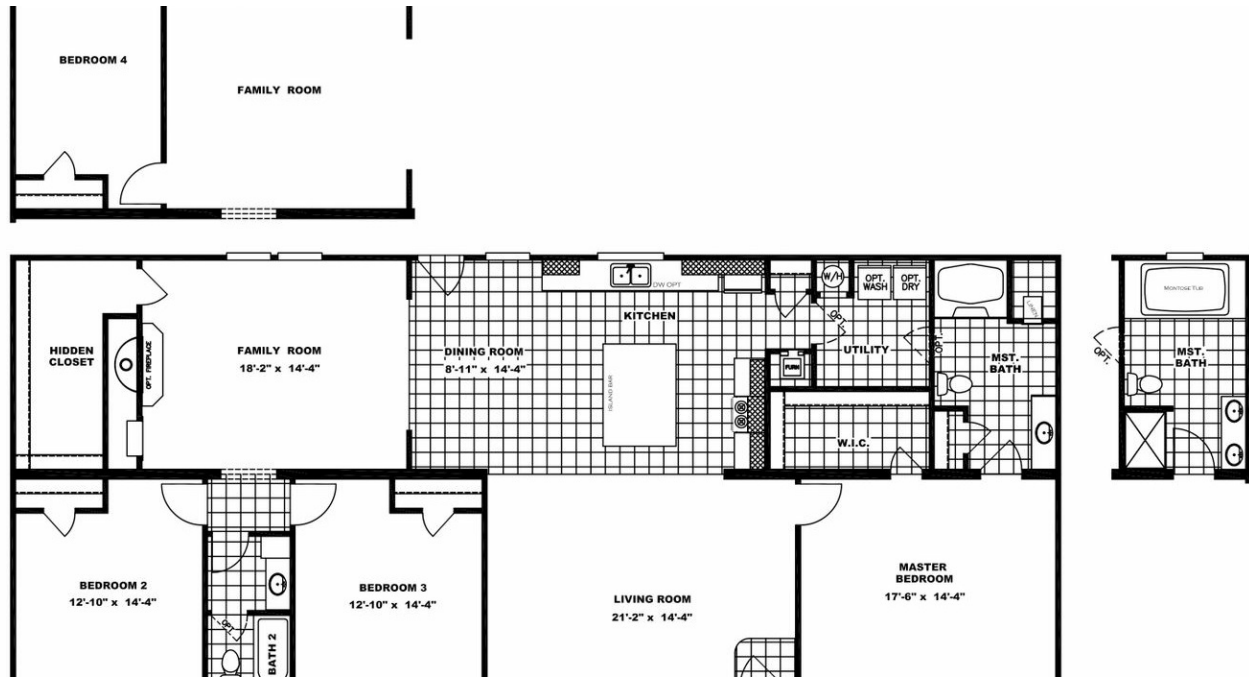
5218 HIGHWAY 11-W  
ROGERSVILLE, TN 37857

Monday - Thursday: 9am - 7pm  
Friday: 9am - 6pm  
Saturday: 9am - 5pm  
Sunday: Closed

(423) 921-8333



# TAHOE 3272A



## TAHOE 3272A Model number: 25RGR32723AH19

3 beds • 2 baths • 2304 sq.ft. • 32' width • 72' depth

Our home building facilities invest in continuous product and process improvements. Plans, dimensions, features, materials, specifications and availability are subject to change without notice or obligation. Renderings and floor plans are representative likenesses of our homes and may differ from the actual homes. We invite you to tour a Home Center near you and inspect the highest value in quality housing available or call (423) 921-8333 to speak with a Home Consultant. Copyright 2017, CMH. All rights reserved.

<https://www.claytonhomesofrogersvilletn.com>

### CLAYTON HOMES-ROGERSVILLE

5218 HIGHWAY 11-W  
ROGERSVILLE, TN 37857

Monday - Thursday: 9am - 7pm  
Friday: 9am - 6pm  
Saturday: 9am - 5pm  
Sunday: Closed

(423) 921-8333